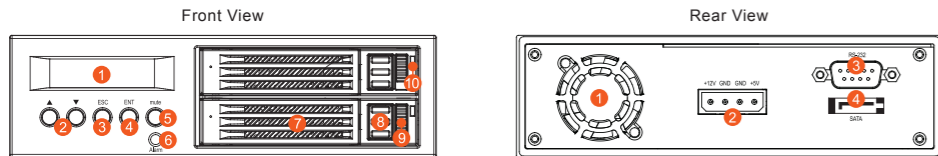


# RAIDON

## MR2020-2S-S2R Quick Installation Guide

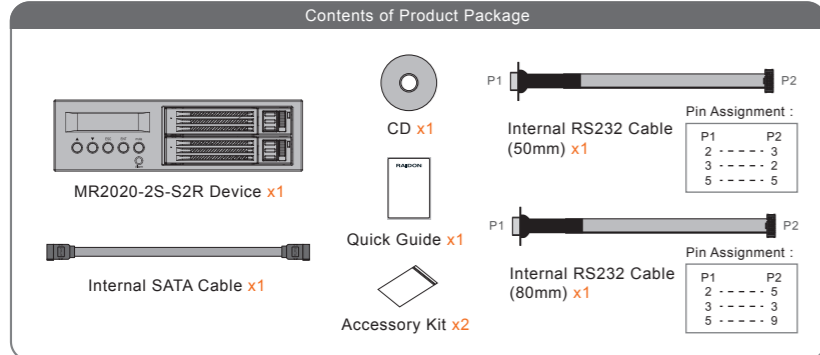
### Product Diagrams and Contents of Product Package



- 1 LCD display panel  
2 Selection key  
3 ESC button  
4 Enter button  
5 Buzzer Mute button  
6 Power(malfunction indicator)  
7 Tray handle  
8 Button for tray clamp  
9 Tray lock  
10 Hard drive status indicator

- 1 Fan  
2 4-PIN power supply socket  
3 RS232 Connection Port  
4 SATA Connection Port

After you open the outer package, make sure that the following items are contained in the package:



**NOTE** "If you like to connect to RS232 port, please check the pin assignment of mother board in advance then choose the right cable."

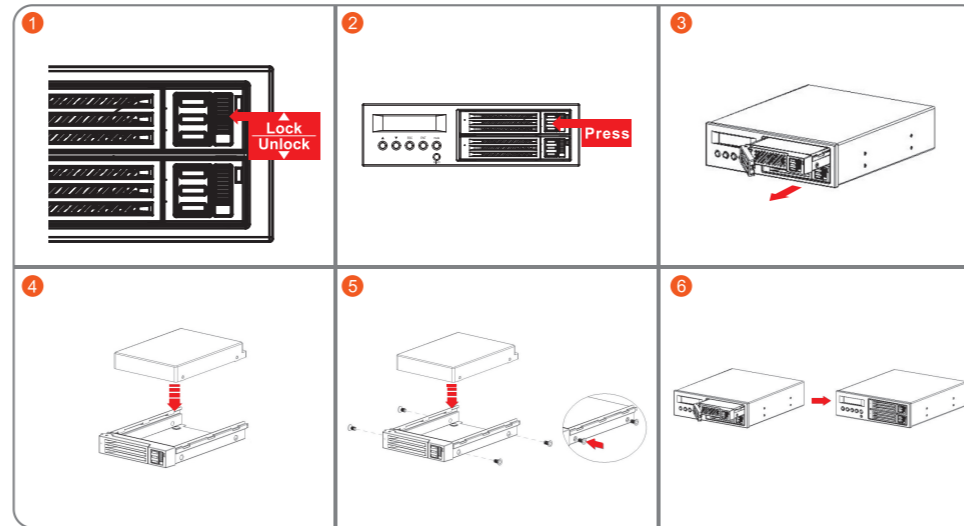
Please make sure related accessories and product body are not missing or damaged. For any questions, please contact local distributor or retailer from your purchase for further assistance.

v3.0(Nov.2012)

1

### Hardware Installation

1. Unlock the hard drive tray lock.
2. Press down the button for hard drive clamp.
3. Pull out the hard drive tray kit.
4. Install a 2.5" hard drive on the hard drive tray.
5. Secure screws from the screw kit in 4 positions.
6. Refit the hard drive tray into the MR2020.

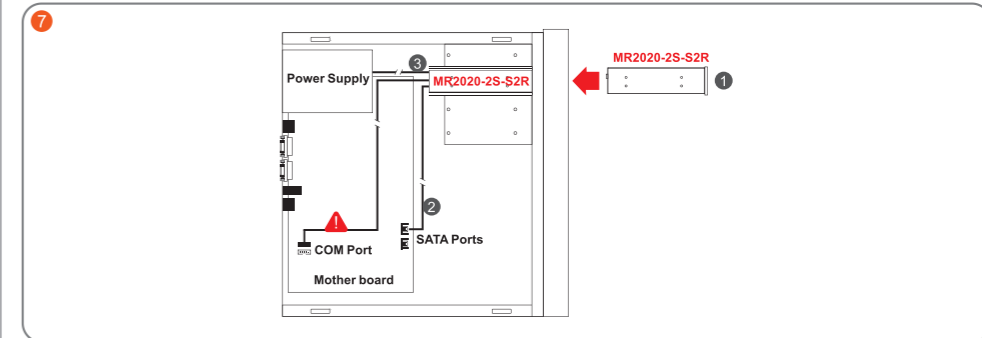


2

7. Install device into one of the CD-ROM bays with screws from the accessory kit. Then properly connect SATA cable and DC cable from your system to the device.



RS232 Port and RS232 Cable : Provides hardware status monitoring to industrial control system or IPC via RS232. If more information are required, please contact [supporting@raidon.com.tw](mailto:supporting@raidon.com.tw).



8. Power on your system after hardware installation is completed, and your operating system will automatically detect the hard drives from booting. Then follow the steps from your operating system to partition and format the drives when necessary, device will be ready to use once the format is completed.

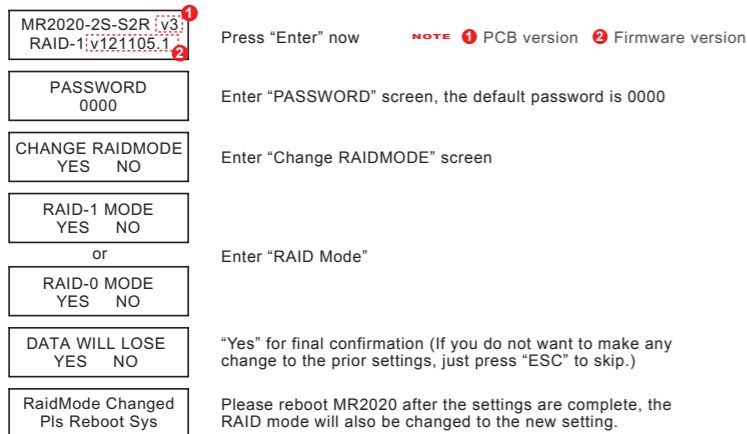
### LED Instruction

	ALARM LED	ACCESS LED	Buzzer	Note
Power On	Purple / Lights On	Blue / Lights On	N/A	
Booting Accomplished	Blue / Lights On	N/A	N/A	
No HDD In Position	Purple / Lights On	N/A	Keep Alarm	
HDD Failed	Purple / Lights On	N/A	Keep Alarm	
Rebuilding	Blue / Lights On	Blue / Blinks	N/A	
HDD Format	Blue / Lights On	Blue / Blinks	N/A	
Access	Blue / Lights On	Blue / Blinks	N/A	
Fan Failed(Stop Rotating)	Purple / Lights On	N/A	Keep Alarm	LCD shows "F"
Overheat(Over 60°C)	Purple / Lights On	N/A	Keep Alarm	LCD shows "T"

3

### RAID Mode Setting

1. After inserting two HDDs, press "Enter" to access RAID switch screen while booting. (The factory default is RAID 1, if it is the RAID mode you require, please do not change it.)



#### 2. RAID 1 Mode (default)

- 1) Insert two brand new hard drives into MR2020.
- 2) As RAID 1 is composed of two hard drives, it can be referred to as disk mirroring, each data will simultaneously be written in two hard drives and the data in two hard drives are exactly the same. Whenever one of the hard drives is failed, the system is still able to work normally. Once the failed hard drive is replaced by a new one, MR2020 will start auto-rebuilding.

The computing method of RAID 1 hard disk capacity:  
[total capacity] = [minimum capacity of hard drive]

Ex:  
2 × 500GB HDD=500GB  
1 × 500GB HDD+1 × 200GB HDD=200GB

#### 3. RAID 0 Mode

- 1) Insert two brand new hard drives into MR2020.
- 2) The RAID 0 combines two hard drives to work as a large hard drive which provides the efficient read/write performance.

The computing method of RAID 0 hard disk capacity:  
[total capacity] = [hard drive number] × [minimum capacity of hard drive]

Ex:  
2 × 500GB HDD=2 × 500GB=1000GB  
1 × 500GB HDD+1 × 200GB HDD=2 × 200GB=400 GB

4

### All Messages Displayed on the LCD

#### 1. Booting

MR2020-2S-S2R v3  
RAID-1 v121105.1

#### 2. Normal Operation

Pri HDD:OK  
Sec HDD:OK

MR2020-2S-S2Rv3  
RAID-1 v121105.1

SYSTEM TEMP  
39°C

SYSTEM FAN  
8021 RPM

#### 3. Drive Failed

Pri HDD:OK  
Sec HDD:FAILED

Pri HDD:FAILED  
Sec HDD:OK

#### 4. Rebuild (After inserting new hard drive. it will start auto-rebuilding 10 seconds later if there is no command made.)

Rebuild Pri->Sec  
ENT=Y ESC=N 10s

Rebuilding...  
Pri => Sec XX%

Rebuild Sec->Pri  
ENT=Y ESC=N 10s

Rebuilding...  
Sec => Pri XX%

#### 5. Drive Not Installed

Pri HDD:OK  
Sec HDD:MISSING

Pri HDD:MISSING  
Sec HDD:OK

#### 6. FAN Failed

Pri HDD:OK F  
Sec HDD:OK

#### 7. Over Heat

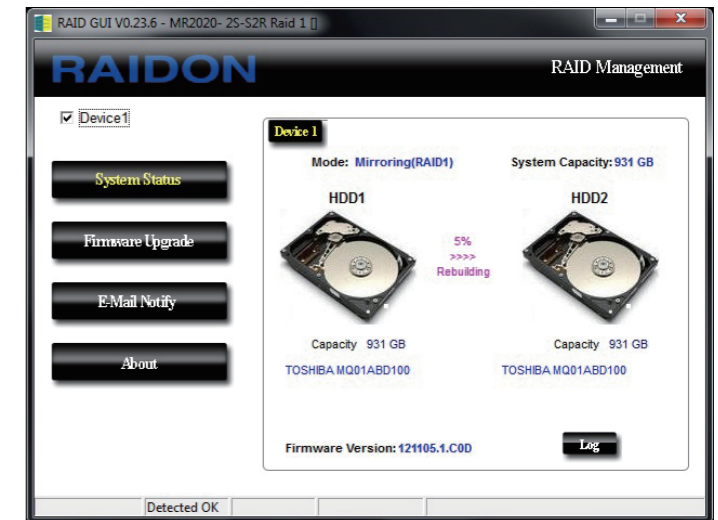
Pri HDD:OK  
Sec HDD:OK T



When "T" is shown, it means that there is an alarm for system over-heating, but the normal data transmission will not be affected; if the ambient temperature has been improved, it will return to normal.

5

### GUI Monitoring Software & Firmware Updating



You can use the GUI software to monitor RAID status and update firmware. Please find the related application program from the disc that provided in the package.



Updating firmware may cause your system unable to operate normally. If your system runs normally, we suggest that you do not update firmware. Should you have any doubts on firmware updating, please contact the technical service staff of RAIDON Technology Inc. or email us at: [supporting@raidon.com.tw](mailto:supporting@raidon.com.tw).

Thank you for choosing product from RAIDON Technology Inc. This information in the manual has been thoroughly checked before publication, but may not conform to the product actually delivered which mean actual product specifications depend on the product shipped to you. Any update in the specifications or product-related information shall not be subject to further notice but for the latest information on the product, please visit the website as [www.RAIDON.com.tw](http://www.RAIDON.com.tw) or contact us at [supporting@raidon.com.tw](mailto:supporting@raidon.com.tw), and we will get back to you as soon as possible.

6