

ST1000-2-U5C  
User Manual

# Forewords

## About this manual

Thank you for using products from Raidon Technology Inc.

This manual will introduce the Stardom ST1000-2-U5C product. Before using Stardom ST1000-2-U5C, you are advised to read this manual first. All information contained in this manual has been carefully confirmed before printing, but the actual product specifications shall be in accordance with those at the time of delivery; any update to product specifications or relevant information may be found on [www.stardom.com.tw](http://www.stardom.com.tw), and no separate notification will be made.

If you have any query regarding the products of Raidon Technology, or you would like the latest product information, please contact us at [supporting@raidon.com.tw](mailto:supporting@raidon.com.tw), and we shall give you a reply as soon as possible.

Note : Raidon Technology will only provide technical support and services on products purchased directly from the company. General consumers and third-party buyers who did not purchase from the company should contact their distributor or supplier directly to receive faster support and response. If you did not purchase products directly from our company, please avoid contacting our company directly because your support and response may be delayed to your satisfaction.

Copyright © RAIDON TECHNOLOGY, INC. All rights reserved.

# Index

<b>Chapter 1</b>	<b>Product Introduction .....</b>	<b>4</b>
1.1.	Product Features .....	4
1.2.	Introduction to the Hardware .....	4
<b>Chapter 2</b>	<b>Installation.....</b>	<b>5</b>
2.1.	Accessories.....	5
2.2.	Hardware Installation.....	5
2.3.	Formatting the Hard Drive .....	7

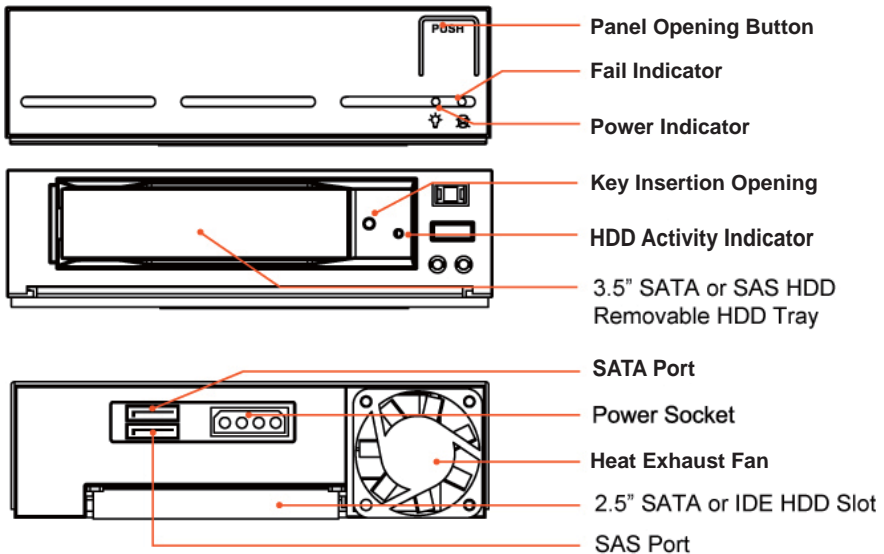
# Chapter 1 Product Introduction

ST1000-2-U5C utilizes SAS (Serial Attached SCSI) technology to enable simultaneous support of SAS and SATA hard drives. With this unit, you will be able to benefit from the high speed performance of SAS hard drives; or acquire cost-effective storage when using SATA hard drives. The unit is also equipped with a removable hard drive tray that is compatible with many other STARDOM product series that will bring convenience and efficiency when data sharing or interchangeability is required. It also provides an extra 2.5" HDD slot to store even more data when necessary.

## 1.1. Product Features

- Simultaneous support for SAS and SATA hard drives
- Supports hot-swapping of hard drives
- Capable of fitting one 3.5" SATA or SAS and one 2.5" SATA or IDE hard drive within simultaneously

## 1.2. Introduction to the Hardware



LED signal indicators:

1. When the power is on, the power LED is green.
2. When the FAIL LED is red, either the fan is malfunctioning or the temperature is too high.
3. When the ACCESS LED on the hard drive TRAY is flashing, it means data is currently being accessed.

# Chapter 2 Installation

## 2.1. Accessories

The following accessories should be included in the product package:

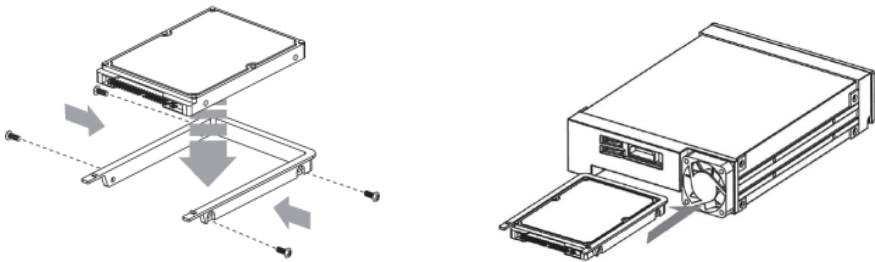
- ST1000-2-U5C main unit
- CD (Electronic format of product datasheet, user manual, etc.)
- User manual
- Spare parts pack (including screws and plastic key)

Should any of the above accessories be missing, or if the main unit appears to be damaged during shipping, please contact your local distributor or sales representative immediately.

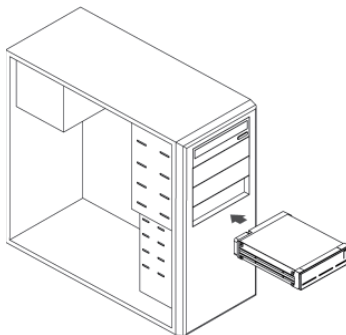
After confirming that all hardware contents and accessories are intact, please follow the procedures below to complete the hardware installation.

## 2.2. Hardware Installation

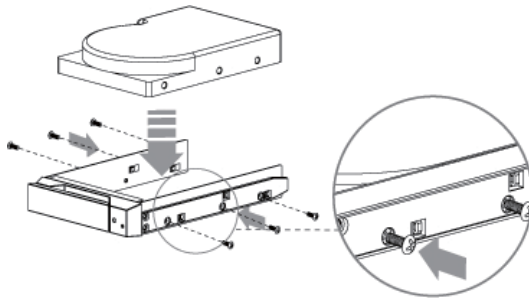
Step 1 If you do not intend to install a 2.5" HDD to this device, you may skip this step and go to step 2, if you intend to install one, please read further. Install the 2.5" HDD by taking out the HDD bracket located at the bottom rear of the main unit then mount the HDD onto the bracket with screws securely fastened. Then re-insert the bracket along with the mounted HDD back into the 2.5" drive slot.



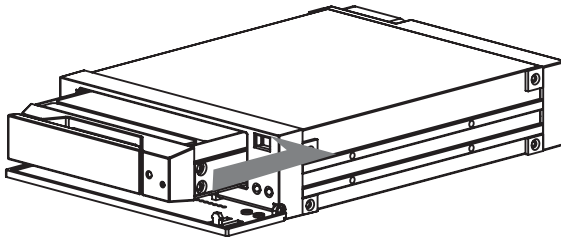
Step 2 Install the ST1000-2-U5C into the housing and secure it with provided screws, then hook up the relevant cables to the relevant connectors.



Step 3 To install the 3.5" hard drive, remove the 3.5" removable HDD tray and secure the hard drive with the screws included in the spare parts pack.




Step 4 Insert the removable tray back into the ST1000-2-U5C main unit.



Step 5 After confirming that all hardware is installed properly, boot up the computer.

Step 6 Complete. You have successfully installed your ST1000-2-U5C.

 Note : If you use SATA port connection connecting to SAS host using a SAS cable, you can either install a SATA or a SAS HDD and obtain performance of whichever HDD installed within. However, if a SATA cable is used, then only SATA HDD can be supported. If you use SAS port connection, you can only use SAS cable along with a SAS HDD installed within the device.

## 2.3. Formatting the Hard Drive

After the hardware is successfully installed, you must first format the hard drive(s) before storing any data into it. For Windows users, please follow the steps below to format the hard drive(s). Below is a demonstration using a 3.5”SAS and a 3.5” SATA HDD.

Step 1 After the computer has properly booted up, please go to “Device Manager”; you will be able to see your newly added hard drive.

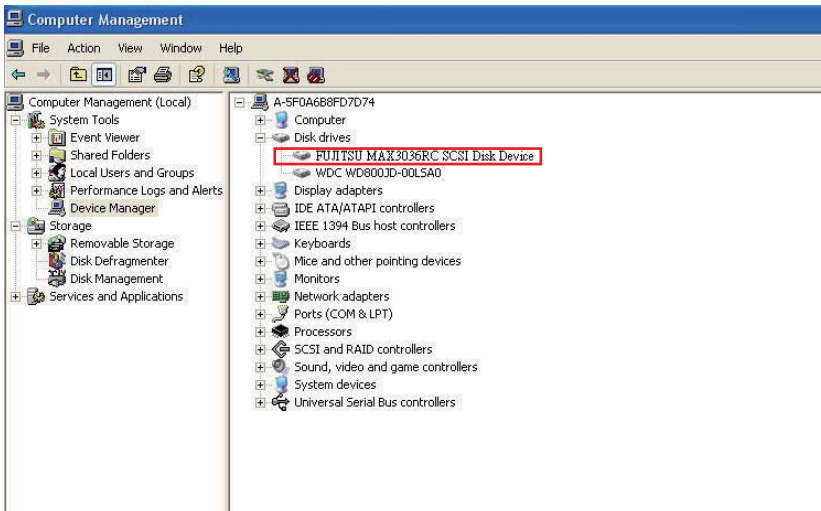


Diagram shows that the Device Manager has found the newly added SAS HDD

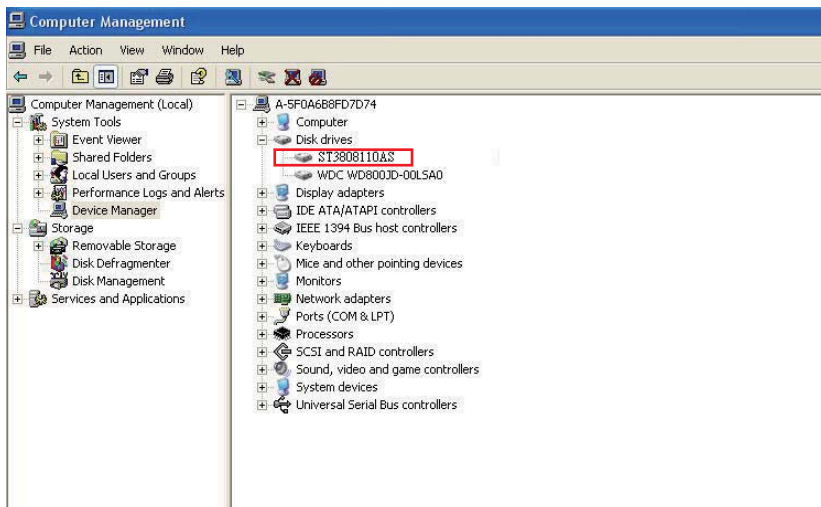


Diagram shows that the Device Manager has found the newly added SATA HDD

Step 2 Go to “Disk Management” and select the newly added hard drive. First you’ll need to “Initialize” the hard drive and then “Format” the disk according to your preferences. After the hard drive has been successfully formatted, you may then begin to use the newly added hard drive device.

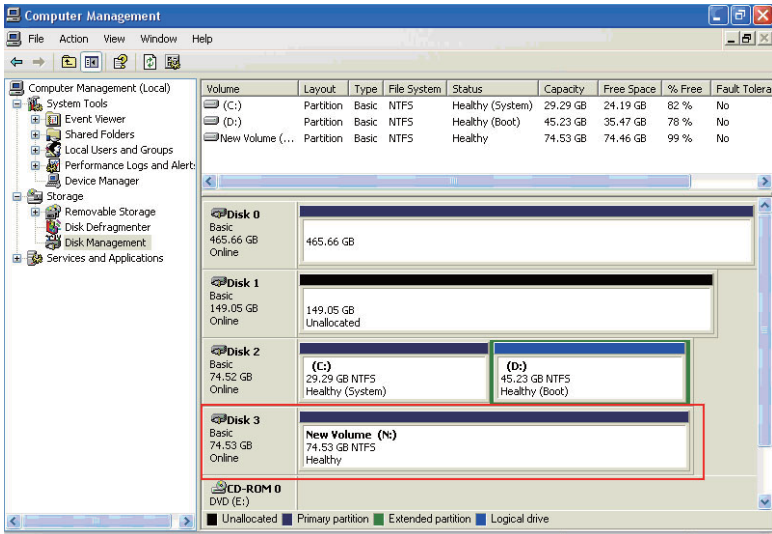


Diagram shows that the Disk Management has also found the newly added hard drive and it is ready for formatting