

HyBrid RunneR iH2420-2S-S2

High Performance of SSD
with Large Capacity of HDD



Zinc Alloy Eject
Panel



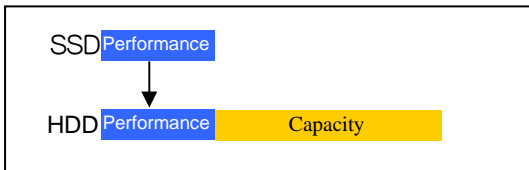
3.5" Form Factor



Internal Hybrid RunneR iH2420 equipped with SATAII interface and combines the benefits of 2.5" SSD and 2.5" HDD. It fully takes the advantages from the performance of SSD to shorten the time consumption of O.S. booting up and programs startup, also utilizes the beginning sector of HDD to backup the identical data from SSD regularly or simultaneously to prevent possible data loss caused by SSD failure. In additions, Internal Hybrid RunneR iH2420 further grants use to the remained capacity from the HDD to provide sufficient also cost effective storage capacity and the best performances for the power users.

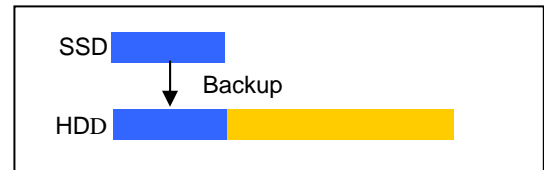
Performance of SSD & Capacity of HDD

Fully benefits from the read/write performance of SSD which is twice faster than HDD, to increase O.S. booting up and programs startup, also obtains the advantage of large storage capacity from HDD.



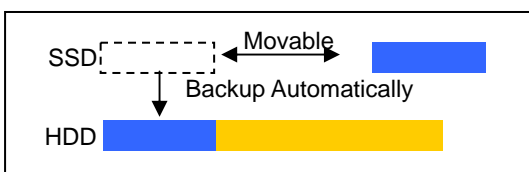
SSD Real-time Backup & Backup scheduling

HDD reserves an equivalent data space from the beginning sector for SSD data real-time backup, or backup scheduling to prevent data lost from unexpected SSD failure.



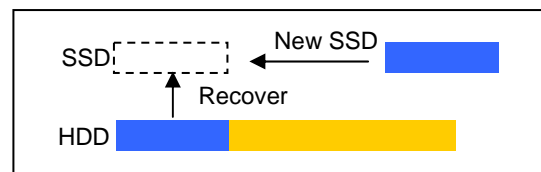
Removable SSD Design

You are able to take SSD with you while working on field as a portable storage, the auto-rebuilding will start when the SSD is inserted back to the iH2420 and recovers the original saved data.



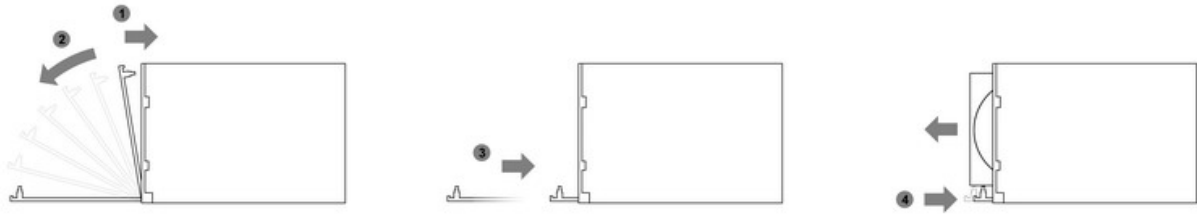
Recover to New SSD

Even if SSD is failed unpredictably, iH2420 can easily recover the data backed up from the original SSD to the new SSD as when it is inserted, to provide user a reliable and consistent system operation.



Easy Ejection Design

A slight press to eject the SSD/ HDD and no screws or tray modules for installing hard drives make SSD/ HDD replacement become easier.



Model No.	iH2420-2S-S2
ASIC	SR2045
Host Interface	SATA II
Transfer Rate	300MB/s
Product Function	HyBrid
Support Hard Drive	1x2.5" SATA SSD & 1x2.5" SATA HDD
Support Single HDD Maximum Capacity	Based on SSD & HDD
Maximum Total Capacity	Based on SSD & HDD
LED Indicators	Yes
Power Supply	SATA 15 Pin (DC 5V & 12V)
Electricity Consuming	5W
Operating System	Windows / Linux
Certifications	CE & FCC
Package Content	Quick Installation Guide / CD (User Guide) / Accessory Kit
Dimension	102W * 147L * 26H mm
Net Weight	0.35kg

The product specification is subject to change without notice.

Logistical Data

Dimension of Article:	102W * 147L * 26H mm	Net Weight:	0.35kg
Dimension of Packing Box:	135W * 200L * 55H mm	Gross Weight (incl. packing):	0.49kg
Dimension/Carton:	416W * 568L * 244H mm	Total Weight:	15.6kg/ctn
Packing Unit:	32units/ctn	Country of Origin:	Taiwan
EAN-No.:	4711132864304		
UPC-No.:	884826503521		

Copyright © RAIDON Technology, Inc. All rights reserved. Contact us:sales1@raidon.com.tw

For more of RAID Storage options, please visit www.RAIDON.com.tw
sales1@raidon.com.tw