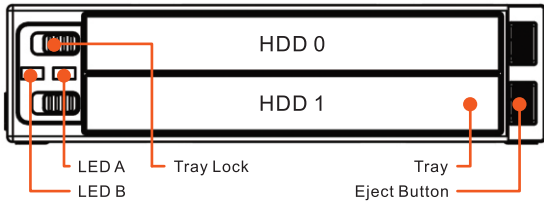


# RAIDON

## ST2760-2S-S2 Quick Installation Guide

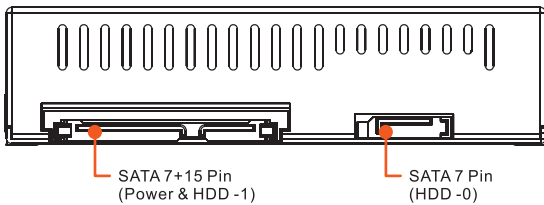
### Product Diagrams and Contents of Product Package

Front View



**NOTE** When the "HDD lock" is position to the right, this means the removable HDD tray is locked into place. Do not press the "Eject Button" at this time as this may cause damages to the removable tray and HDD lock.

Rear View



**NOTE** When connecting the power cable, always make sure that the connector is not inverted as inverting connection will lead to system failures, and even cause motherboard to burn out.

v1.0(Nov.2010)

1

After you open the outer package, make sure that the following items are contained in the package:

### Contents of Product Package



ST2760-2S-S2 Device x1



Quick Installation Guide x1



Accessory Kit x2

Please make sure that the related accessories and product body are not damaged or missing. If you have any question, please contact the local distributor or the retailer you purchase from for help.

### Product Specifications

Model No.	ST2760-2S-S2
Host Interface	SATA III 6.0 Ghz
Drive Interface	2.5" SATA
Transfer Rate	3.0Gb/s
RAID Level(s) Support	JBOD
Hot-Swap	YES
Power Supply	+5v, +12v (SATA 15pin)
LED Display	YES
Operating System Support	Windows, Linux, Mac & Windows Vista
Dimensions (mm)	101.7(L) × 147(W) × 25.8(H)
Weight (kg)	0.8
Certification(s)	CE / FCC

### LED Instruction

#### Corresponding LED to HDD Position

LED A	HDD 0
LED B	HDD 1

#### Status Indication Definition

Power On	Illuminates blue color
Over high temperature	Illuminates purplish color
Access	Flashes blue color

2

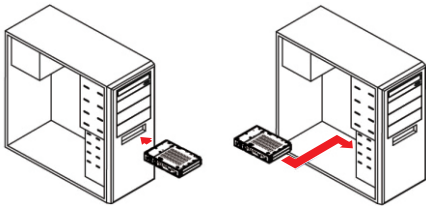
### Hardware Installation

1. Install the product unit into the computer chassis and make the necessary connections and mount the product unit properly and securely to the bay position desired. (Please use the 6#32x4 case screws contained in the accessories bag).

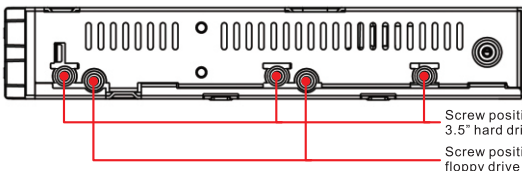
※ Mounting Positions

2. Remove the safety support bracket from the removable HDD tray prior to mounting the hard drive. The bracket will no longer be used after the drive is mounted to the tray; it's only used as a support to avoid damages to the tray.

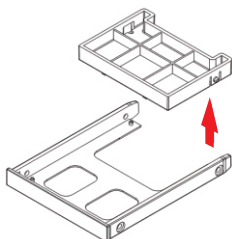
1



※



2

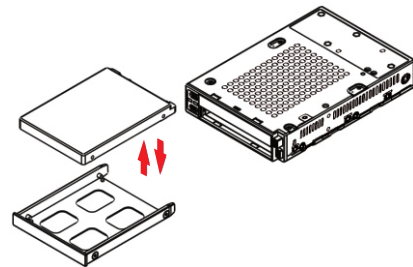


3

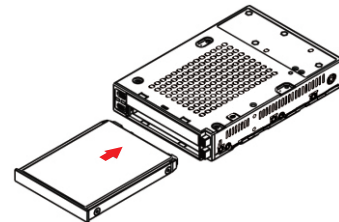
3. Mount and stabilize the hard drive onto the removable tray to avoid unnecessary drive movements. Please refer to accessory bag and use the enclosed M3\*4 screws to mount.

4. Re-insert the removable tray when completed and make sure the tray is securely inserted into the appropriate position.

3



4



5. When hardware installation is completed, you can turn on the power of the main unit to proceed with relevant settings and applications.

6. Installation completed. Your operating system should automatically detect the hard drives within. Please proceed to format the drives. Once formatting is completed, you may then start to operate the device.

Thank you for choosing product from RAIDON Technology Inc. This information in the manual has been thoroughly checked before publication, but may not conform to the product actually delivered which mean actual product specifications depend on the product shipped to you. Any update in the specifications or product-related information shall not be subject to further notice but for the latest information on the product, please visit the website as [www.RAIDON.com.tw](http://www.RAIDON.com.tw) or contact us at [supporting@raidon.com.tw](mailto:supporting@raidon.com.tw), and we will get back to you as soon as possible.

4