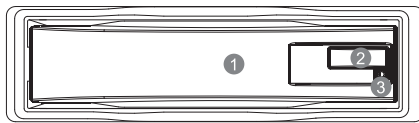


RAIDON

GT1660-SB3/GT1660-WSB3 Quick Installation Guide

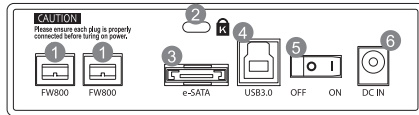
Product Diagrams and Contents of Product Package

Front View

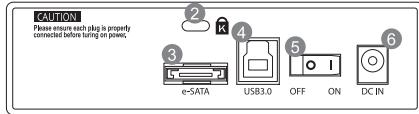


① HDD Tray ② Tray Button ③ LED

GT1660-WSB3 Rear View



GT1660-SB3 Rear View



① 1394b Port ② Lock Hole ③ eSATA Port
④ USB3.0 Port ⑤ Power Switch ⑥ Power Socket



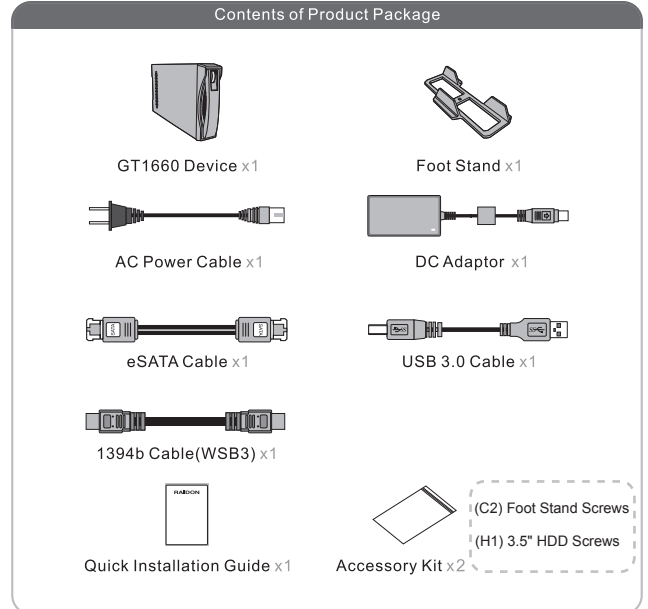
- NOTE**
1. Please be noted that two host interfaces cannot be used at the same time, data transmission can only be done through an interface with a computer.
 2. When changing to another host interface, please power off GT1660 and connect to another port before powering it on again.
 3. Please power off GT1660 before exchanging HDD, and then power it on after the HDD is exchanged.

v1.0(March .2014)

1

After you open the outer package, make sure that the following items are contained in the package:

Contents of Product Package



Please make sure that the related accessories and product body are not damaged or missing. If you have any question, please contact the local distributor or the retailer you purchase from for help.

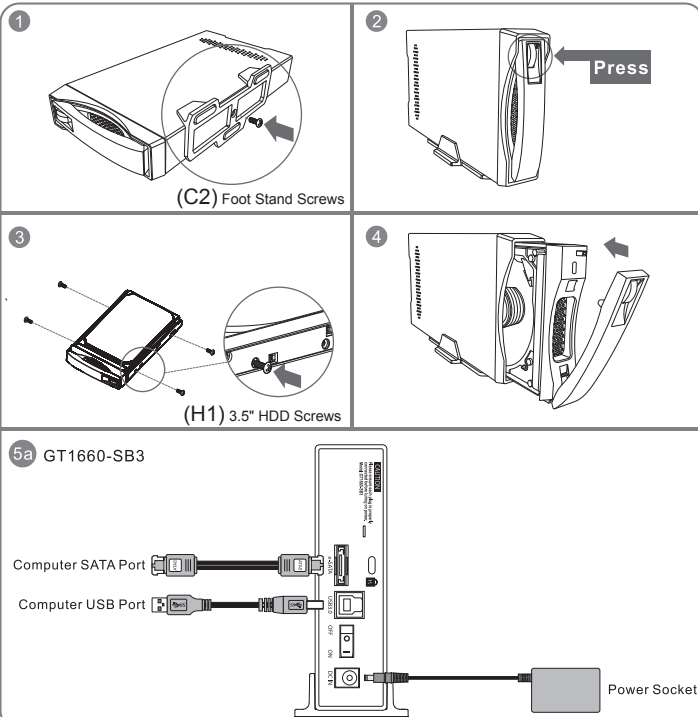
LED Instruction

Status	GT1660-SB3	GT1660-WSB3
Power On	Blue Lights/ On	Blue Lights/ On
No HDD	-	-
Disk Idling	Blue Lights/ On	Blue Lights/ On
Access	Blue & Red/ Blinks	Blue / Blinks

2

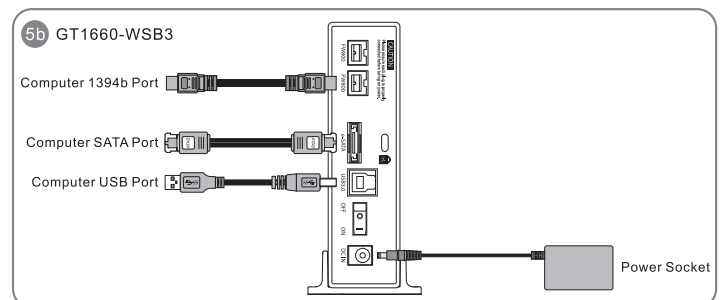
Hardware Installation

1. Install foot stand.
2. Press tray button and take out the tray.
3. Demount the plastic holder from tray and use its screws to fix the hard drive.
4. Once the HDD installation is completed, insert the tray back and close the tray handle.
- 5a. Connect GT1660- SB3 via either USB 3.0, eSATA to the computer.
Link AC power cable to the adaptor and then connect each connector to GT1660-SB3 and computer, then, power on GT1660-SB3.



3

- 5b. Connect GT1660-WSB3 via either USB 3.0, eSATA, or 1394b cable to the computer.
Link AC power cable to the adaptor and then connect each connector to GT1660-WSB3 and computer, then, power on GT1660-WSB3.



6. Hardware Installation is completed and the OS will automatically recognize your hard drive once the computer booting is done. If your hard drive needs to be formatted, please follow the format procedures. After the formatting is completed, you can start to use the hard drive.

Precaution before Application

1. Please ensure that the hard drives are free of bad tracks before using, otherwise, it may cause system crash in turn resulting in data loss.
2. No matter which host interface is used for connection, before taking out the hard drive, please safely remove it via computer operating system.
3. To avoid data corruptions or data loss, it is strongly suggested not to withdrawing hard drive from the device or powering off the device while data is accessing.

Thank you for choosing product from **RAIDON Technology Inc.** This information in the manual has been thoroughly checked before publication, but may not conform to the product actually delivered which mean actual product specifications depend on the product shipped to you. Any update in the specifications or product-related information shall not be subject to further notice but for the latest information on the product, please visit the website as www.RAIDON.com.tw or contact us at supporting@raidon.com.tw, and we will get back to you as soon as possible.

4