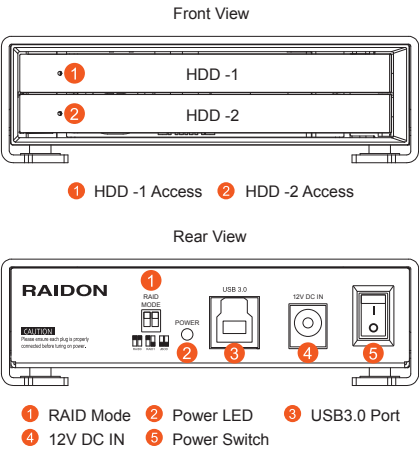


品名:R2420-B3英文快速安裝導引
尺寸:210 x 297mm(A4)
料號:13-0GR26B3000
材質:150磅雪銅紙
版本:v1.0

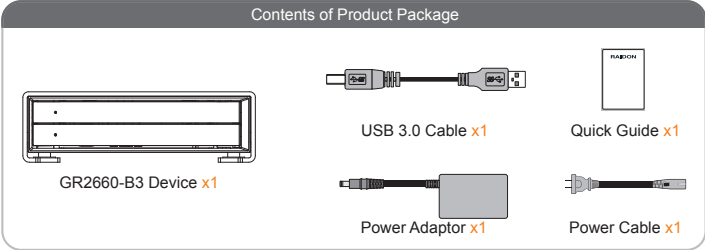
RAIDON

GR2660-B3 Quick Installation Guide

Product Diagrams and Contents of Product Package



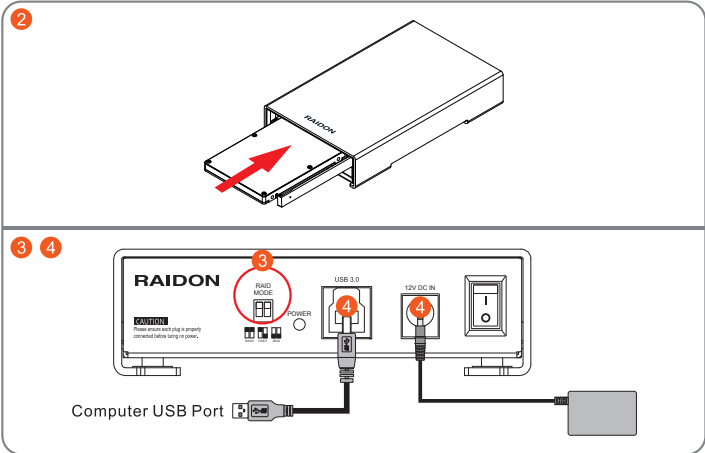
After you open the outer package, make sure that the following items are contained in the package:



Please make sure that the related accessories and product body are not damaged or missing. If you have any question, please contact the local distributor or the retailer you purchase from for help.

v1.0 (July, 2014)

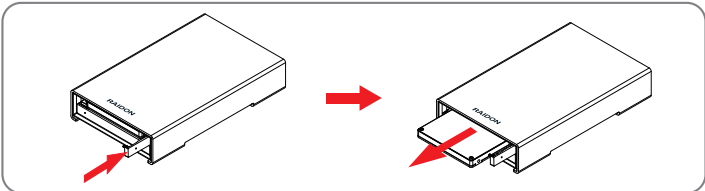
- 2. Install SSD/HDD into GR2660-B3 slot and make sure the SSD/HDD is properly fix to the right position and cover the front panel.
- 3. Configure the RAID level via the RAID mode switch from the back panel. (RAID 0, 1 & JBOD)
- 4. Connect the related cable to the correct plugs.



- 5. Hardware installation is now complete. Please power on the unit and follow the OS indications to format the hardware. After the configuration is completed you may access the data.

※ For the future hard drive change, you can open the front panel to 90 degrees, perpendicular to the surface cover gently pushed into the body and when pushed in the end will be triggered the SSD/HDD to eject the device that SSD/HDD immediately withdraw. Always assure the front panel has pull out entirely before close it.

※ Push the front cover to the end and the hard drive will be ejected.



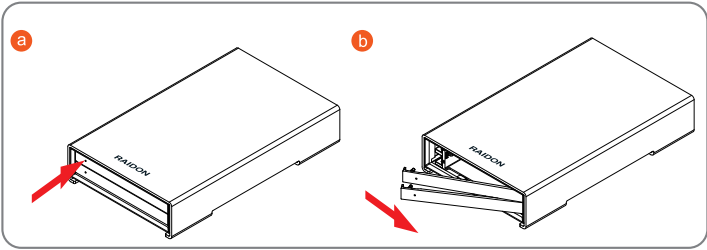
LED Instruction

Status	No HDD	Standby	Data access	HDD failed	Sleeping or Host unplugged	Rebuilding
RAID 0	Red lights on	Blue lights on	Blue blinking	Red lights on	---	---
RAID 1	Red lights on	Blue lights on	Blue blinking	Red lights on	---	Source: Blue Blinking Target: Red and Blue Blinking
JBOD	Red lights on	Blue lights on	Blue blinking	---	---	---

Hardware Installation

Please refer to the following procedures for the hardware installation of GR2660-B3:

1. Installing the SSD/HDD into the product by push further inside from the arrow point, the front panel will automatically bounce to further open to 90 degrees.
 - a. Push the arrow point place.
 - b. Move the front case until 90 degrees.



Important Notice!

1. Coming with a concept of reducing energy consumption, GR2660-B3 and O.S. are synchronized for green and cost saving.
2. Please always connect the USB cable to the computer to ensure the energy saving function operating normally.
3. GR2660-B3 supports RAID 0 (Striping), RAID 1 (Mirroring) and JBOD. Please configure the RAID level before powering on.
4. If you reset the RAID mode later on, it would destroy the data in the disks. Please backup the data before configuring the RAID mode.
5. Once the computer turn to "Standby" or "Sleep" mode, GR2660-B3 will still complete the rebuilding function. However, it will not change to "Standby" mode after rebuilding. You need to shut down the GR2660-B3 manually or wake up the computer to synchronize "Standby " or "Sleep" mode together.
6. GR2660-B3 is utilizing the 12V adapter, please DO NOT use the 5V adapter to avoid the machine and data failure.

Thank you for choosing product from **RAIDON Technology Inc.** This information in the manual has been thoroughly checked before publication, but may not conform to the product actually delivered which mean actual product specifications depend on the product shipped to you. Any update in the specifications or product-related information shall not be subject to further notice but for the latest information on the product, please visit the website as **www.RAIDON.com.tw** or contact us at **supporting@raidon.com.tw** , and we will get back to you as soon as possible.