

RAIDON



InTANK iR2024

For 2 x 2.5" SATA III Drive RAID Module

Data Security Comes in Handy

Accepting 2 x 2.5-inch SATA 6.0 Gb/s hard drives and coming with mirroring RAID 1 function to backup and protect data on time, no worry about system failed caused by hard drive failure any more. Also iR2024 supports RAID 0 function which enhances read/write speed.

Furthermore, it is embedded with RS232 port for hardware status monitoring purpose. Compact size with 5.25-inch CD-ROM bay, internal RAID device iR2024 perfect fits in server, IPC and workstation.

Features

1. Fit 1 x 5.25" CD-ROM Bay Dimension
2. Hardware RAID 0 / RAID 1
3. For 2 x 2.5" SATA III HDD/SSD (9.5mm high)
4. LCD display
5. Tray Module with Key-lock Design
6. Drives Hot-swappable
7. Included software monitoring program



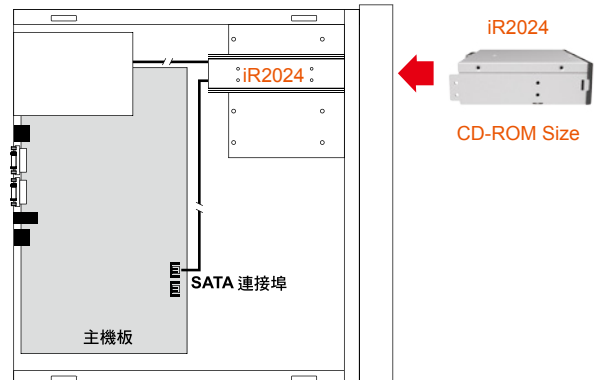
User-friendly Display

RAIDON equipped with clear readable LCD display and LED indicators for system monitoring during operation so users can easily grasp the status of the system at all times. Moreover, it comes with visual and audio alarms whenever failure occurs.



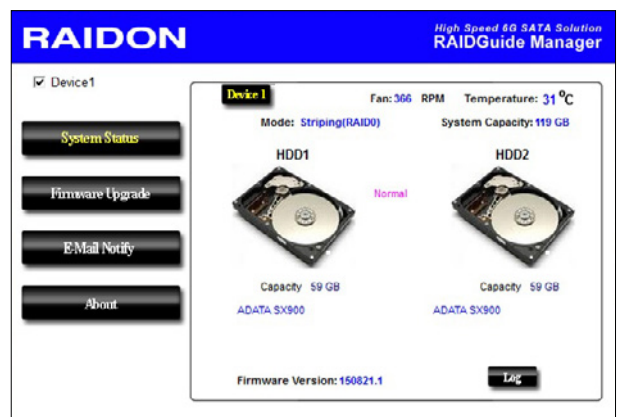
Upgrade to RAID with Easy

Upgrade your system to RAID array storage through install the iR2024 to the standard 5.25" CD-ROM. This internal data storage solution can help you to solve the problem of requiring larger storage volume but with limited space.



Included software monitoring program to easily view hard disk status

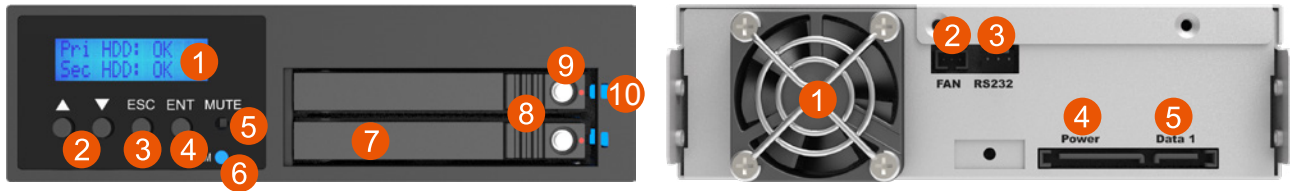
In the iR2024, in addition to the back light screen that can display the module status, for Windows users, a software RAIDGuide Manager monitoring program is also provided. It allows users to understand the RAID module and hard disk status more directly through the monitoring program. Even better, after setting the monitoring program, it will take the initiative to send letters to users when the hard disk fails. This instant notification allows users to be aware of the situation as soon as possible to remedy the situation faster.



Changeable Disk Tray Module

Hot-swappable is one benefit of SATA interface. With the disk tray module design, user can change the disk quickly and easily. No need to open the chassis and even no need to power off the system first. And RAIDON provides several disk tray modules for user to choose to use, and user can buy these disk trays and install disks on it first as spare parts to replace the disk in the iR2024 directly once it failed.





1. LCD Display
2. UP/DOWN Buttons
3. ESC Button
4. Enter Button
5. Mute Button

6. Power Failure Indicator
7. HDD Tray Handle
8. HDD Tray Ejection
9. HDD tray key lock
10. HDD Access Indicator

1. Cooling Fan
2. 3-pin Fan Connector
3. RS232 Connector
4. 15-pin Power Connector
5. 7-pin SATA Connector

Technical Specification

iR2024	
Interface	6 Gbps SATA III 1 Port
Compatible Drive	2 x 2.5" SATA III HDD/SSD (up to 6 Gbps)
Certification	CE/FCC
Storage Mode	RAID 1 or RAID 0
Operating System Support	Windows 7 or above, OS X 10.10 or above
Electrical and Operating Requirements	<ul style="list-style-type: none"> • Line voltage: 100-240V AC • Frequency: 50Hz to 60Hz, single phase • Operating temperature: 32° to 104° F (0° to 40° C) • Storage temperature: -4° to 116° F (-20° to 47° C) • Relative humidity: 5% to 95% noncondensing
Size	Height : 43 mm Width : 148 mm Depth : 140 mm
Product Code	iR2024 EAN : 4713227440783 UPC : 884826505341
Carton	10 pcs per carton
Package Accessories	<ul style="list-style-type: none"> • iR2024 x 1 (with 2.5" removable drive tray enclosed x 2) • Internal RS232 Cable x 1 • External RS232 Cable x 1 • SATA Cable x 1 • Quick Installation Guide x 1 • Screws & Keys

