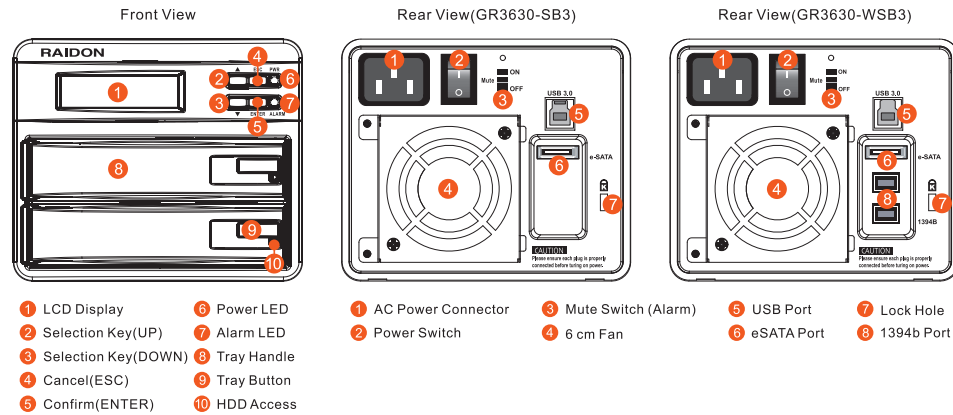


# RAIDON

## GR3630-SB3 / WSB3 Quick Installation Guide

### Product Diagrams and Contents of Product Package



After you open the outer package, make sure that the following items are contained in the package:

Contents of Product Package		
Items	GR3630-SB3	GR3630-WSB3
GR3630 Device	✓	✓
AC Power Cable	✓	✓
USB 3.0 Cable	✓	✓
eSATA Cable	✓	✓
1394b Cable		✓
Quick Installation Guide	✓	✓
CD	✓	✓
Accessory Kit	✓	✓

Please make sure that the related accessories and product body are not damaged or missing. For any questions, please contact the local distributor or the retailer you purchase from for further assistance.

v1.0 (January.2012)

1

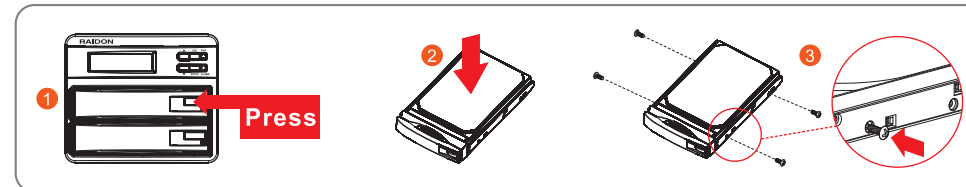
### Important Notice!

Please read carefully before you use your console.

- If you want to get best application performance and best product compatibility, we suggest you to use brand new hard disks of same specifications, model number and brand.
- If you want to install GR3630 in two used hard disks, before installation, please first backup data in these hard disks to other hard disk to avoid data loss in the setting process later on.
- If you are using GR3630 Series, the factory default value of it is RAID 1, we suggest users to first consider the application before using it. If your requirement is data security, please set it as RAID 1 mode; and if your consideration is to expand storage capacity, please set it as RAID 0 mode. Should you need resetting later on, it would destroy the data in the disks.
- Users are able to set RAID level and GR3630 basic functions through the LCD monitor and the right keys at the front of the product. For setting process, please refer to the user manual.

### Hard Drive Installation

- Press down the button for hard drive clamp.
- Pull out the hard drive tray kit and install a 3.5" hard drive on the hard drive tray.
- Secure screws from the screw kit in 4 positions and refit the hard drive tray into the GR3630.



### Start GR3630

- Connect AC power cord to your power outlet and GR3630.
- Choose the interface (USB & eSATA & 1394b) that you want, and hook up your computer with the connecting cable.
- Switch on the power of GR3630, when the LCD displays Pri HDD: OK and Sec HDD: OK after about 20~30 seconds, it indicates that GR3630 has been booted.

✧The factory default value of GR3630 Series is RAID 1 mode.



2

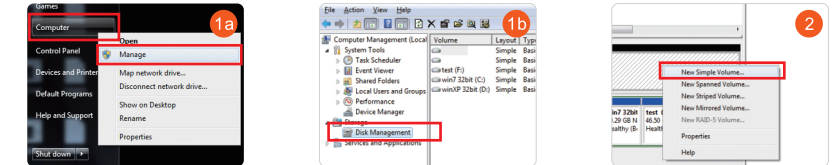
### Hard disk formatting and disk drive establishing

#### 1. Windows operating system

- Enter into device manager of your computer.
  - Use the mouse to click on Start→Computer and then click the right mouse button to select Manage option.
  - Click on Disk Management.
- Add in GR3630 hard disk and format it.

Move the mouse to the upper region of Non-configured area and click the right button; it will display the list of New Disk Partition.

✧During the setting process, we suggest you to choose NTFS format.

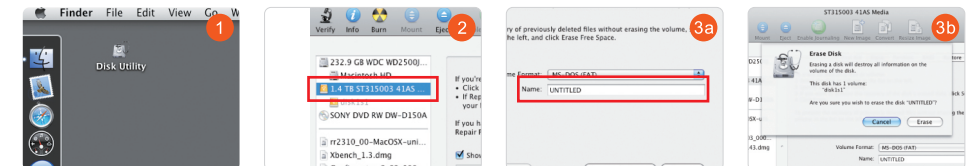


According to Disk Management Wizard instructions, click Next to proceed the process until finish.

- Setting is finished, you can start using this product.

#### 2. Mac operating system

- Enter into Disk Utility of your computer.
- Click on this hard disk device
- Add in GR3630 hard disk name and do formatting operation.
  - Choose hard disk formatting and disk drive name setting (can be set as Gr3630)
  - After finish setting the disk drive, click clear key and start formatting the hard disk.



- Setting is finished, you can start using this product.

3

### Message Indication of LED and Buzzer

Status	LED Indicators			Buzzer
	Power LED	Alarm LED	HDD LED	
Power On	Blue / Light On	-----	-----	-----
No disk	Blue / Light On	Red / Light On	-----	Yes
Disk Failure	Blue / Light On	Red / Light On	-----	Yes
Access	Blue / Light On	-----	Blue / Blink	-----
Fan Failure	Blue / Light On	Red / Light On	-----	Yes
Overheat(Over 55°C)	Blue / Light On	Red / Light On	-----	Yes
Rebuilding	Blue / Light On	-----	Blue / Blink	-----

### LCD monitor operation guide

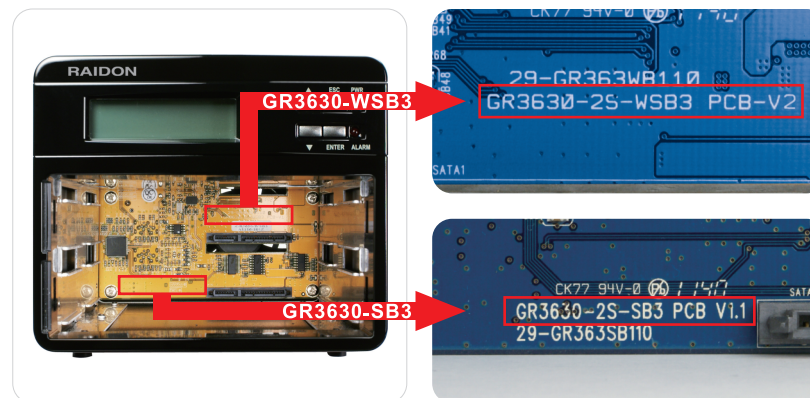
- Pri HDD : OK  
Sec HDD : OK  
HDD status is normal
- Pri HDD : OK  
Sec HDD : MISSING  
Missing: You have not installed hard disk.
- Pri HDD : OK  
Sec HDD : FAILED  
Fail: You have installed hard disk, but it has failed
- Pri HDD : OK  
Sec HDD : OK  
Fan Failed
- Pri HDD : OK  
Sec HDD : OK  
Overheat

4

### Energy saving

- GR3630 and the OS are synchronized to standby/sleep/shut down mode for green and cost saving. Also, GR3630 is recovered for normal usage while operating/powering on the PC.
- GR3630 will change to energy saving mode after switching on the power, also the fan, LCD and HDD will stop its operation, which is a normal condition. After connecting to the PC, GR3630 will operate normally.
- Please always connect the USB cable to the computer for ensuring the energy saving function operating normally.
- If the temperature of GR3630 is over 55°C under energy saving mode, the fan will rotate automatically until the temperature cool down. Besides, after the temperature is cooling down, the fan will turn to standby mode and stop working.
- During data auto-rebuilding, GR3630 will complete the process once it on synchronization. And, after the rebuilding progress is finished, GR3630 will be synchronized for energy saving as well.
- Required version: GR3630-SB3 PCB Version V1.1 above; GR3630-WSB3 PCB V2.0 above

If you want to check the PCBA version, please take out the HDD tray to examine it.



5

Thank you for choosing product from RAIDON Technology Inc. This information in the manual has been thoroughly checked before publication, but may not conform to the product actually delivered which mean actual product specifications depend on the product shipped to you. Any update in the specifications or product-related information shall not be subject to further notice but for the latest information on the product, please visit the website as [www.RAIDON.com.tw](http://www.RAIDON.com.tw) or contact us at [supporting@raidon.com.tw](mailto:supporting@raidon.com.tw), and we will get back to you as soon as possible.

6