

# RAIDON



## SOHORAID GR3660 Series

External Hardware RAID Storage for Two 3.5"/2.5" SATA Disk

USB Type-C interface, compatible with USB Type-C and Type-A host interfaces.

A software RAID storage system is unable to overcome the problems associated with cross-platform usage. It is only through hardware RAID controller chipsets that users can use these hard drives concurrently in Mac or Windows computers. With the SOHORAID GR3660 Series (GR3660)'s built-in SATA 6G hardware RAID controller chipset, not only does it promise high transmission speed, it also eliminates the cross-platform usage issues associated with RAID 0/1/BIG/JBOD setups. Also, with hardware RAID, all data is computed and processed by the built-in ROC (RAID on Chip) processor. With such advantages, your computer performance can be focused on running the software and work, instead of handling the storage device's transmission issues. (If RAID storage need to be used between macOS and Windows platforms, it needs to use the same file format, for example: exFat file format).

### Features

1. External Hardware RAID storage for macOS and Windows
2. With USB Type-C interface, it's reversible
3. Supports USB Type-C or USB Type-A host interface
4. Plug and play, no driver needed
5. Hot swappable disk tray, supports 2 x 3.5"/2.5" SATA disk
6. High efficiency cooling fan
7. Aluminum chassis



## Compatible with USB Type-C and Type-A Hosts

GR3660 comes with one USB Type-C interface, but not every PC/Mac comes with USB Type-C interface too. Therefore, based on the model, RAIDON provides two kinds of USB cables, one is USB Type-C to Type-C cable and the other is USB Type-C to Type-A cable, or both. User can choose which GR3660 to buy based on what host interface he/she has, no need to buy a adapter or other cable.

GR3660-B31 : with 1 x USB Type-C to Type-C cable

GR3660-B31A : with 1 x USB Type-C to Type-A cable

GR3660-BA31 : with 1 x USB Type-C to Type-C cable and 1 x USB Type-C to Type-A cable



## The solid aluminum chassis plus one powerful low noise Fans

GR3660's solid chassis is made by a thickness aluminum-alloy plate. And its aluminum housing and the 4 cm FANs (with safe FAN GUARDS) really help an efficient heat dissipation for your long time use.

The new GR3660 have the manual fan adjustment that users can adjust the fan speed to high speed or low speed. User does not need to worry about the fan sound to disturb the work environment, and the device can be still working efficiency.



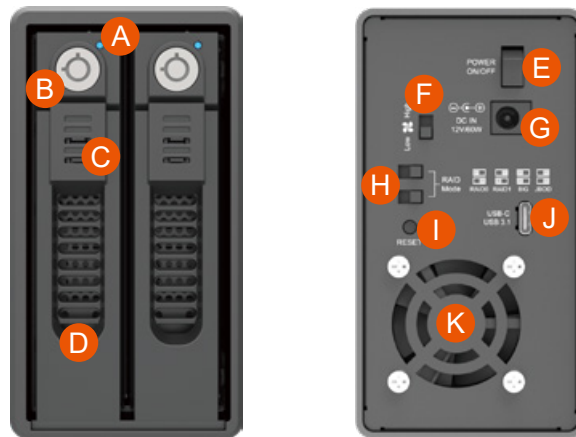
## Hot-Swappable Disk Tray, supports 3.5"/2.5" Disk

Comes with easy-to-use disk tray, GR3660 supports most 3.5"/2.5" disk (both HDD and SSD) on the market. Under RAID 1 mode, when one disk failed, user just need to hot-swap out the failed disk and replace a new one back even the GR3660 is power on. It's easier for user to maintain the GR3660.



★ Spare disk tray is available





- |                         |                     |   |
|-------------------------|---------------------|---|
| A. HDD access light     | E. Power switch     | I. RESET hole                           |
| B. HDD tray key lock    | F. Fan speed switch | J. USB 3.2 Gen2 Type-C port<br>(10Gbps) |
| C. Tray button          | G. Power socket     | K. Fan                                  |
| D. HDD enclosure handle | H. RAID switch      |   |

## Technical Specification

Interface	USB 3.2 Gen2 Type-C port (10Gbps)				
Compatible Drive	2 x 3.5"/2.5" SATA III ( 6 Gbps) HDD/SSD				
Certification	CE/FCC				
Storage Mode	RAID 0 / RAID 1 / BIG / JBOD				
Operating System Support	Windows 7 or above, OS X 10.10 or above				
Electrical and operating Requirements	<ul style="list-style-type: none"> <li>• Line voltage: 100-240V AC</li> <li>• Frequency: 50Hz to 60Hz, single phase</li> <li>• Operating temperature: 32° to 104° F (0° to 40° C)</li> <li>• Storage temperature: -4° to 116° F (-20° to 47° C)</li> <li>• Relative humidity: 5% to 95% noncondensing</li> </ul>				
Size	Height : 102 mm    Width : 64 mm    Depth : 222 mm				
Product Code	GR3660 Series	EAN	UPC	USB Type A-C cable	USB Type C-C cable
	GR3660-B31A	4713227441278	884826505839	√	
	GR3660-B31	4713227441254	884826505815		√
	GR3660-BA31	4713227441261	884826505822	√	√
Carton	8 pcs per carton				
Package Accessories	<ul style="list-style-type: none"> <li>• GR3660 product x 1 (with removable drive tray enclosed x 2)</li> <li>• USB 3.2 Gen2 Type-C to Type-C Cable x 1 (for GR3660-BA31/GR3660-B31)</li> <li>• USB 3.2 Gen2 Type-C to Type-A Cable x 1 (for GR3660-BA31/GR3660-B31A)</li> <li>• AC/DC Adapter x1</li> <li>• AC Power Cable x 1</li> <li>• Quick Installation Guide x 1</li> <li>• Screws &amp; Ejector pins</li> </ul>				

