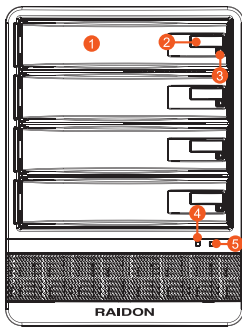


# RAIDON

## GR5630-SB3 Quick Installation Guide

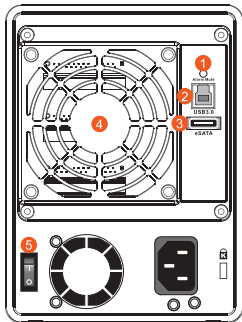
### Product Diagrams and Contents of Product Package

Front View



- 1 Tray Handle
- 2 Button for Tray Clamp
- 3 HD Status LED
- 4 Alarm LED
- 5 Power LED

Rear View



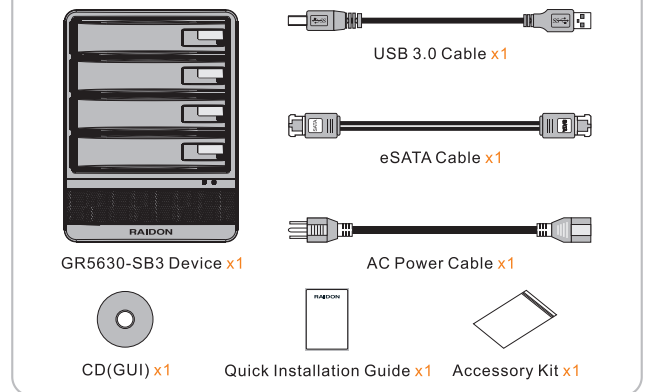
- 1 Mute Button
- 2 USB3.0 Port
- 3 eSATA Port
- 4 Fan
- 5 Power Switch

v1.0(Dec.2010)

1

After you open the outer package, make sure that the following items are contained in the package:

#### Contents of Product Package



Please make sure that the related accessories and product body are not damaged or missing. If you have any question, please contact the local distributor or the retailer you purchase from for help.

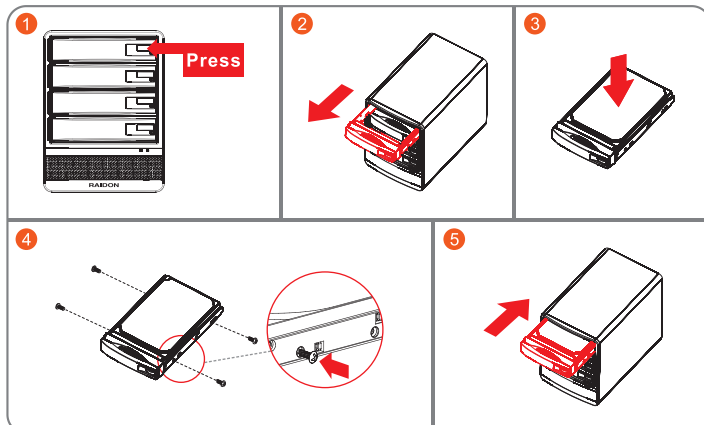
### Message Indication of LED and Buzzer

Status Description	Alarm LED	Power LED	HD Status LED	Buzzer
Power On	—	Blue light	Blue light	—
No Hard Drives	—	Blue light	—	—
Hard Drive Failure	Red light	Blue light	Red light	Sound
Rebuilding	—	Blue light	Source : Blue / Blink	—
			Target : Red / Blue Blink Alternately	
Access		Blue light	Blue / Blink	—
Fan Failure (Stop working)	Red light	Blue light	—	Sound
Overheat(over 55°C)	Red light	Blue light	—	Sound

2

### Hardware Installation

1. Press the eject button to release the hard drive clamp.
2. Horizontally pull out the hard drive tray.
3. Install a 3.5" hard drive to the hard drive tray.
4. Secure installed hard drive with screws from the screw kit in 4 positions.
5. Insert the hard drive tray back into GR5630.



### Install GR5630

1. Please install 4 of brand new hard drives to each hard drive trays and properly insert them back into GR5630.
2. Choose one cable (USB or eSATA) to establish connection between PC and GR5630. (Please DO NOT use both USB and eSATA cables at the same time.)
3. Connect AC cable and power on GR5630.
4. Modify RAID levels from your demand through the application software inside of package CD. (Default Setting : JBOD, Recommendation : RAID 5)
5. After RAID level modification, disk volume can be formatted via disk managing tools, then GR5630 will be ready to use.

3

### Precaution before Application

1. RAIDON strongly suggest to use 4 the same of brand new SATA hard drives for the optimal system performance.
2. Using used hard drive may cause the system fail to initialize properly. Please use low level format tools or file editors to clear existing data on the hard drives before installing them into GR5630.
3. Please DO NOT connect USB and eSATA cables at the time. To interchange connection between USB and eSATA, please switch off the power of GR5630 before changing the cables.
4. The GUI software from the CD can only be used under Windows system therefore desired RAID level must be configured before connecting GR5630 to Mac/Linux system, otherwise, only the default JBOD function will be available to these two operating systems.
5. While hot swapping any one of hard drive under JBOD function with USB connection, operating systems will automatically perform drive redetection, therefore, please ensure all of data accessing are not in progress before swapping hard drives, or, it may result in data damage from disconnection during operating system redetection.

Thank you for choosing product from **RAIDON Technology Inc.** This information in the manual has been thoroughly checked before publication, but may not conform to the product actually delivered which mean actual product specifications depend on the product shipped to you. Any update in the specifications or product-related information shall not be subject to further notice but for the latest information on the product, please visit the website as [www.RAIDON.com.tw](http://www.RAIDON.com.tw) or contact us at [supporting@raidon.com.tw](mailto:supporting@raidon.com.tw), and we will get back to you as soon as possible.

4