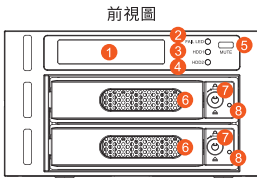
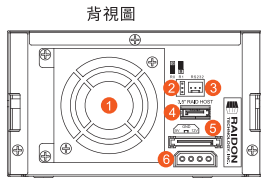


iR2622 / iR2622-W / iR2622-G 快速安裝導引

產品示意圖與配件表

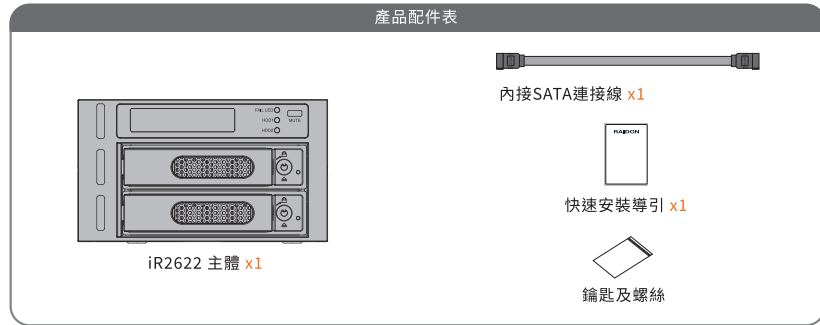


- 1 液晶顯示面板
- 2 電源/故障顯示燈
- 3 主硬碟狀態指示燈
- 4 次要硬碟狀態指示燈
- 5 靜音按鈕
- 6 硬碟抽盒把手
- 7 硬碟卡榫按鍵
- 8 硬碟讀取燈



- 1 散熱風扇
- 2 RAID 模式設定
- 3 RS232 埠
- 4 3.5" 硬碟 SATA 連結埠
- 5 SATA 15Pin 電源輸入埠
- 6 4Pin 電源輸入埠

打開包裝外盒後，包裝內容應包含下列組件：



- 請先確認相關配件與產品本身是否有受損或是缺少配件，若有任何疑問，請與您的經銷商或業務人員聯絡。
- 請前往官網 (www.stardom.com.tw) 下載說明書、驅動程式以及其餘相關資源。

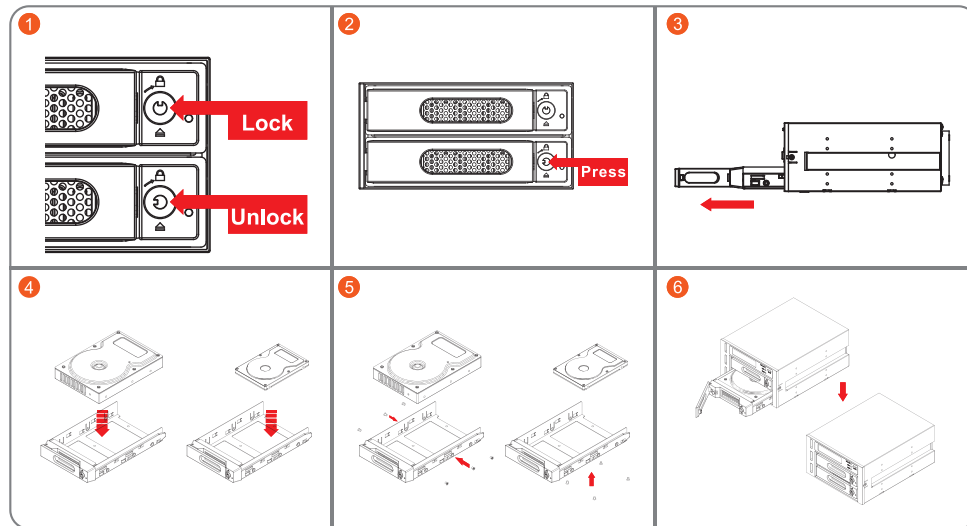


(V1.5 July. 2025)

1

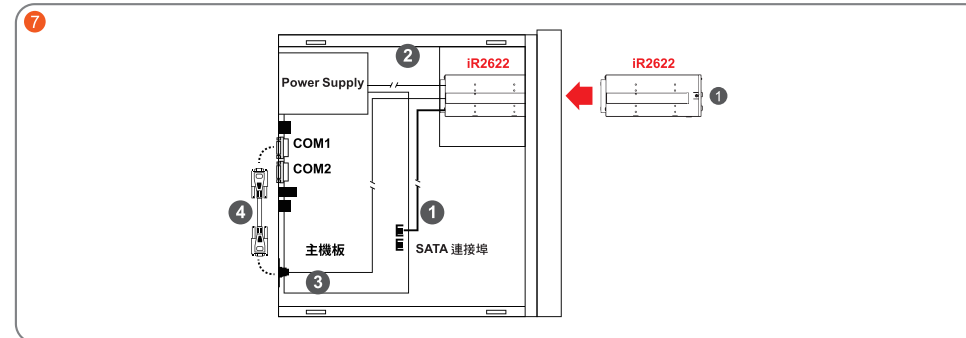
硬體安裝

- 解開硬碟托盤鎖。
- 按下硬碟卡榫按鍵。
- 抽出硬碟托盤組。
- 將 3.5 吋或 2.5 吋硬碟安裝在硬碟托盤上。
- 鎖上附件包內的螺絲。
- 將硬碟托盤安裝回 iR2622。



2

- 將主體安裝於電腦機殼上的 CD-ROM 位置，請使用配件零件包的螺絲固定，並連接 SATA 連接線與 DC 電源線。



- 硬體安裝完成。一旦開啟電腦，您的作業系統會自動辨識所裝置好的硬碟。如果您的硬碟是必須被格式化的，請依照電腦的作業系統進行硬碟格式化步驟。當完成硬碟格式化後，硬碟便可以進行資料讀寫。

燈號說明

	警示燈(ALARM)	HDD1	HDD2	TRA1	TRA2	蜂鳴器
待機	—	橘燈恆亮	—	藍燈恆亮	—	—
硬碟故障	紅燈恆亮	—	—	紅燈恆亮	—	鳴叫
資料存取	—	橘燈恆亮	—	藍紫燈閃爍	—	—
資料重建 (Source)	—	橘燈恆亮	—	藍燈恆亮	—	—
資料重建 (Target)	—	—	—	紅燈閃爍	—	—
風扇故障	紅燈恆亮	—	—	—	—	鳴叫
溫度過高 (≥50°C)	紅燈恆亮	—	—	—	—	鳴叫

3

設定磁碟陣列

- 請透過機器後面的 jumper 來設定 RAID 層級。出廠預設值是 RAID 1。機器背面有三根 pin 腳用來設定 RAID 層級，若要設定 RAID 0 模式，請選用下面兩根；若要設定 RAID 1 模式，請選用上面兩根。



RAID 0 模式



RAID 1 模式

- RAID 1 模式 (default)

- 放置 2 顆新硬碟在 iR2622。
- 兩顆硬碟進行同步寫入達到備份效果，其中一顆硬碟損壞仍可繼續運作，將損壞硬碟更換新硬碟後將會自動進行資料重建；當裝入的硬碟為 1 大 1 小時，iR2622 會將大容量的硬碟當成小容量的硬碟。

使用 RAID 1 的硬碟容量算法：
[總容量]=[容量最小的硬碟]

例：
2 x 500GB 硬碟 = 500GB
1 x 500GB 硬碟 + 1 x 200GB 硬碟 = 200GB

- RAID 0 模式

- 放置 2 顆新硬碟在 iR2622。
- 將 2 顆 2.5 吋或 3.5 吋硬碟容量加總，讀取效率會加快；當裝入的硬碟為 1 大 1 小時，iR2622 會將大容量的硬碟當成小容量的硬碟。

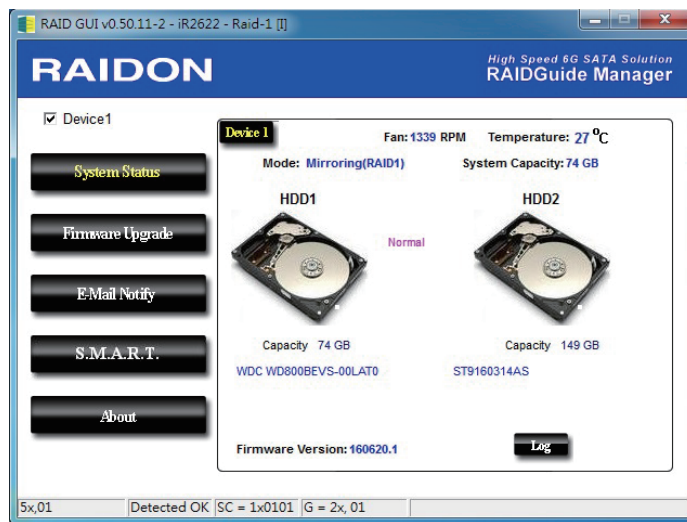
使用 RAID 0 的硬碟容量算法：
[總容量] = [硬碟數] x [容量最小的硬碟]

例：
2 x 500GB 硬碟 = 2 x 500GB = 1000GB
1 x 500GB 硬碟 + 1 x 200GB 硬碟 = 2 x 200GB = 400GB

在新增或變更 RAID 模式後需重新啟動產品，以確保完成更新為新的 RAID 模式。

4

啟用 RAIDGuide 軟體的畫面如下



RAIDGuide 可用來觀察 RAID 狀況，以及更新韌體，可於光碟中找到相關程式。



隨意的更新韌體將有可能導致您的系統無法正常運作，若您的系統運作一切正常，建議您不必進行韌體更新。若您有韌體更新上的疑慮，請先聯絡銳銳科技的技術服務人員，或來信 supporting@raidon.com.tw。

5

LCD顯示的各種訊息

- 開機與正常待機狀態

iR2622
RAID-1 v150821.1 → Pei HDD:OK
Sec HDD:OK

- 硬碟損毀

Pei HDD:OK
Sec HDD:FAILED
Pei HDD:OK
Sec HDD:OK

- 溫度過高 (≥50°C)

Pei HDD:OK
Sec HDD:OK T

- 風扇故障

Pei HDD:OK
Sec HDD:OK F

- RAID 1 降級，Pri 硬碟損毀而 Sec 硬碟仍然可正常存取

RAID-1 degraded
Pri : X Sec : O

- RAID 1 損毀，Pri 與 Sec 硬碟皆損毀

RAID-1 failure
Pri : X Sec : X

- RAID 1 損毀，Source 碟重複

RAID-1 failure
Double Source

- RAID 0 損毀，Pri 硬碟遺失而 Sec 硬碟仍然正常

RAID-0 failure
Pri : M Sec : O

- 資料重建

Rebuilding
Sec → Pri 32%



當「T」出現時，是代表系統過熱的警告，但是不至於影響正常資料傳輸，只要改善環境溫度，就可恢復正常。

感謝您使用 銳銳科技股份有限公司 的產品。
本手冊裡的資訊在出版前雖然已經被詳細確認，但實際產品規格將以出貨時為準；任何的產品規格或相關資訊更新，請您直接上 www.RAIDON.com.tw 網站查詢，或是直接與您的業務聯絡窗口聯繫，本公司將不另行通知。

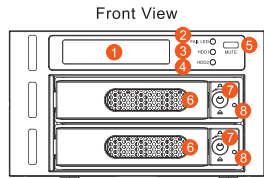
如果您對 銳銳科技 的產品有任何疑問，或是想獲得最新產品訊息、使用手冊或韌體，請您聯絡 supporting@raidon.com.tw，我們將儘速回覆您。

6

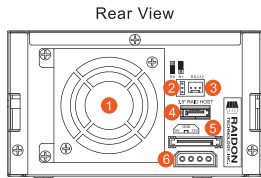
RAIDON

iR2622 / iR2622-W / iR2622-G Quick Installation Guide

Product Diagrams and Contents of Product Package

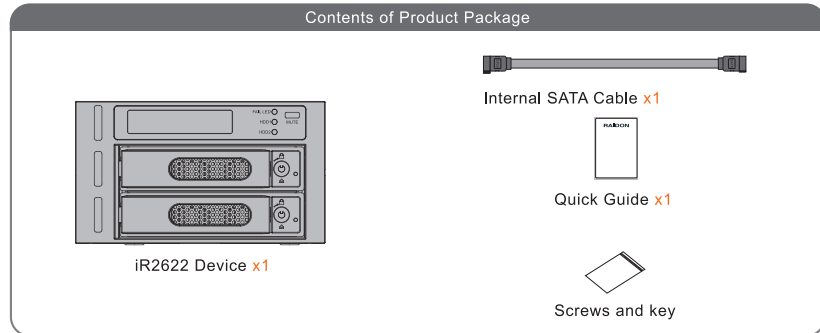


- 1 LCD Display
- 2 LED of failure Alarm
- 3 Pri. HDD status indicator
- 4 Sec. HDD status indicator
- 5 Mute Button
- 6 Removable drive tray
- 7 HDD tray key lock
- 8 HDD Access



- 1 Cooling fan
- 2 RAID mode switch
- 3 RS232 Port
- 4 SATA Port
- 5 15 PIN Power Connector
- 6 4Pin Power Connector

After you open the outer package, make sure that the following items are contained in the package:



- Please check the included parts and the product itself for any damage or missing parts. If you have any questions, please contact the retailer or sales representative.
- Please visit the official website (www.stardom.com.tw) to download user manuals, drivers and other related resources.

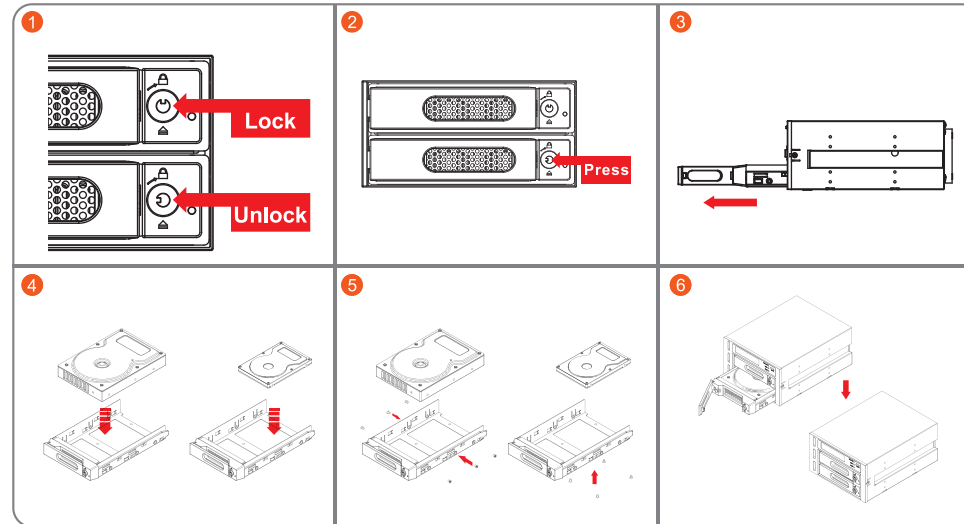


(V1.5 July 2025)

1

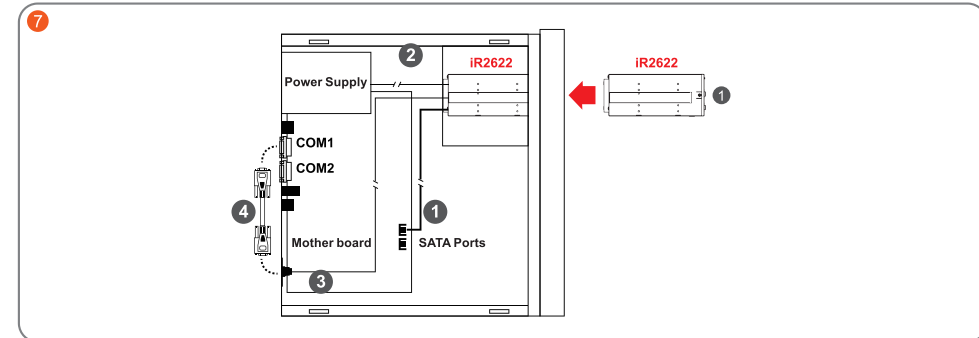
Hardware Installation

- Unlock the hard drive tray lock.
- Press down the button for hard drive clamp.
- Pull out the hard drive tray kit.
- Install a 3.5" or 2.5" hard drive on the hard drive tray.
- Secure screws from the screw kit in 4 positions.
- Refit the hard drive tray into the MR2020.



2

- Install device into one of the CD-ROM bays with screws from the accessory kit. Then properly connect SATA cable and DC cable from your system to the device.



- Power on your system after hardware installation is completed, and your operating system will automatically detect the hard drives from booting. Then follow the steps from your operating system to partition and format the drives when necessary, device will be ready to use once the format is completed.

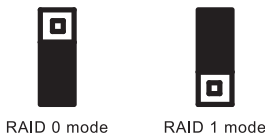
LED Instruction

	Fail LED	HDD 1	HDD 2	TRAY 1	TRAY 2	Buzzer
Stand by	— —	Orange / light on	— —	Blue / light on	— —	— —
HDD Failure	Red / light on	— —	— —	Red / light on	— —	On
Access	— —	Orange / light on	— —	Blue and Purple / blinking	— —	— —
Rebuilding(Source)	— —	Orange / light on	— —	Blue / light on	— —	— —
Rebuilding(Target)	— —	— —	— —	Red / blinking	— —	— —
Fan Failed(Stop Rotating)	Red / light on	— —	— —	— —	— —	On
Overheat(Over 50°C)	Red / light on	— —	— —	— —	— —	On

3

RAID Mode Setting

- Please select the RAID mode with the jumper located at the back panel. The original default is RAID 1, still there are three pins at the back panel for RAID mode selection: RAID 0 mode by setting the jumper on the bottom of the two pins. RAID 1 mode by setting the jumper on the top of the two pins.



2.RAID 1 Mode (default)

- Insert two brand new hard drives into iR2622.
- As RAID 1 is composed of two hard drives, it can be referred to as disk mirroring, each data will simultaneously be written in two hard drives and the data in two hard drives are exactly the same. Whenever one of the hard drives is failed, the system is still able to work normally. Once the failed hard drive is replaced by a new one, iR2622 will start auto-rebuilding.

The computing method of RAID 1 hard disk capacity:
[total capacity] = [minimum capacity of hard drive]

Ex:
2 × 500GB HDD=500GB
1 × 500GB HDD+1 × 200GB HDD=200GB

3.RAID 0 Mode

- Insert two brand new hard drives into iR2622.
- The RAID 0 combines two hard drives to work as a large hard drive which provides the efficient read/write performance.

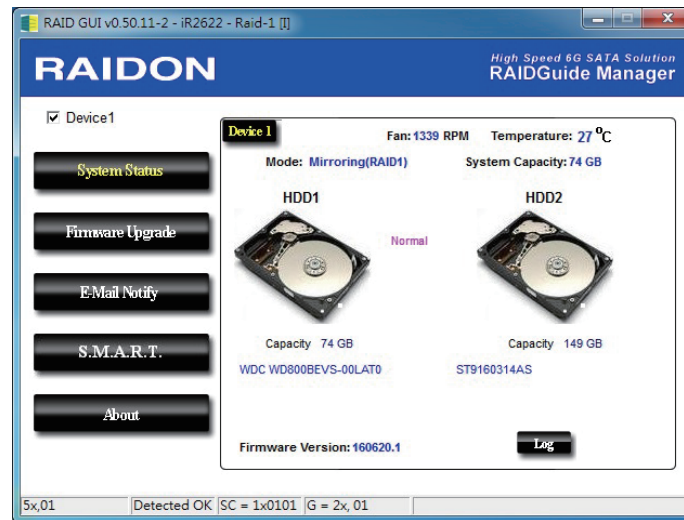
The computing method of RAID 0 hard disk capacity:
[total capacity] = [hard drive number] x [minimum capacity of hard drive]

Ex:
2 × 500GB HDD=2 × 500GB=1000GB
1 × 500GB HDD+1 × 200GB HDD=2×200GB=400 GB

The product needs to be restarted after adding or changing the RAID mode, and the update is guaranteed to be the new RAID mode.

4

GUI Monitoring Software & Firmware Updating



You can use the GUI software to monitor RAID status and update firmware. Please find the related application program from the disc that provided in the package.



Updating firmware may cause your system unable to operate normally. If your system runs normally, we suggest that you do not update firmware. Should you have any doubts on firmware updating, please contact the technical service staff of RAIDON Technology Inc. or email us at: supporting@raidon.com.tw.

5

All Messages Displayed on the LCD

1. Booting and Normal status

iR2622
RAID-1 v150821.1 → Pei HDD:OK
Sec HDD:OK

2. Drive Failed

Pei HDD:OK
Sec HDD:FAILED
Pei HDD:FAILED
Sec HDD:OK

3. Over Temperature (≥50°C)

Pei HDD:OK
Sec HDD:OK T

4. Fan Failure

Pei HDD:OK
Sec HDD:OK F

5. RAID 1 Degraded. Primary hard drive is failure, but secondary hard drive is normal.

RAID-1 degraded
Pri : X Sec : O

6. RAID 1 Failure. Primary and secondary hard drives are failure.

RAID-1 failure
Pri : X Sec : X

7. RAID 1 Failure (Double Source)

RAID-1 failure
Double Source

8. RAID 0 Failure. Primary hard drive is missing, but secondary hard drive is normal.

RAID-0 failure
Pri : M Sec : O

9. Rebuilding

Rebuilding
Sec→Pri 32%



When "T" is shown, it means that there is an alarm for system over-heating, but the normal data transmission will not be affected; if the ambient temperature has been improved, it will return to normal.

Thank you for choosing product from RAIDON Technology Inc. This information in the manual has been thoroughly checked before publication, but may not conform to the product actually delivered which mean actual product specifications depend on the product shipped to you. Any update in the specifications or product-related information shall not be subject to further notice but for the latest information on the product, please visit the website as www.RAIDON.com.tw or contact us at supporting@raidon.com.tw, and we will get back to you as soon as possible.

6