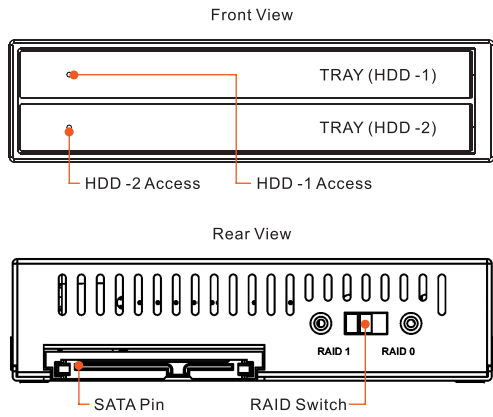
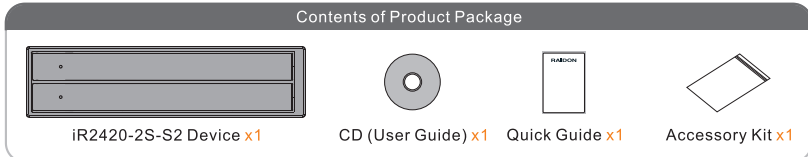


### Product Diagrams and Contents of Product Package



After you open the outer package, make sure that the following items are contained in the package:



Please make sure that the related accessories and product body are not damaged or missing. If you have any question, please contact the local distributor or the retailer you purchase from for help.

### LED Instruction

Status Description	LED Status
No HDD	Blue & Red / Blink alternatively & Buzzer Alarm
Access	Purple / Blinks
RAID Failure	Red / Lights On & Buzzer Alarm
Rebuilding (RAID 1)	Purple / Lights On (Source)
	Purple & Red / Blink alternatively (Target)
HDD Idling	Blue / Lights On
HDD Verifying	Blue / Lights On (Source)
	Purple & Red / Blink alternatively (Target)

v1.0(Nov.2010)

1

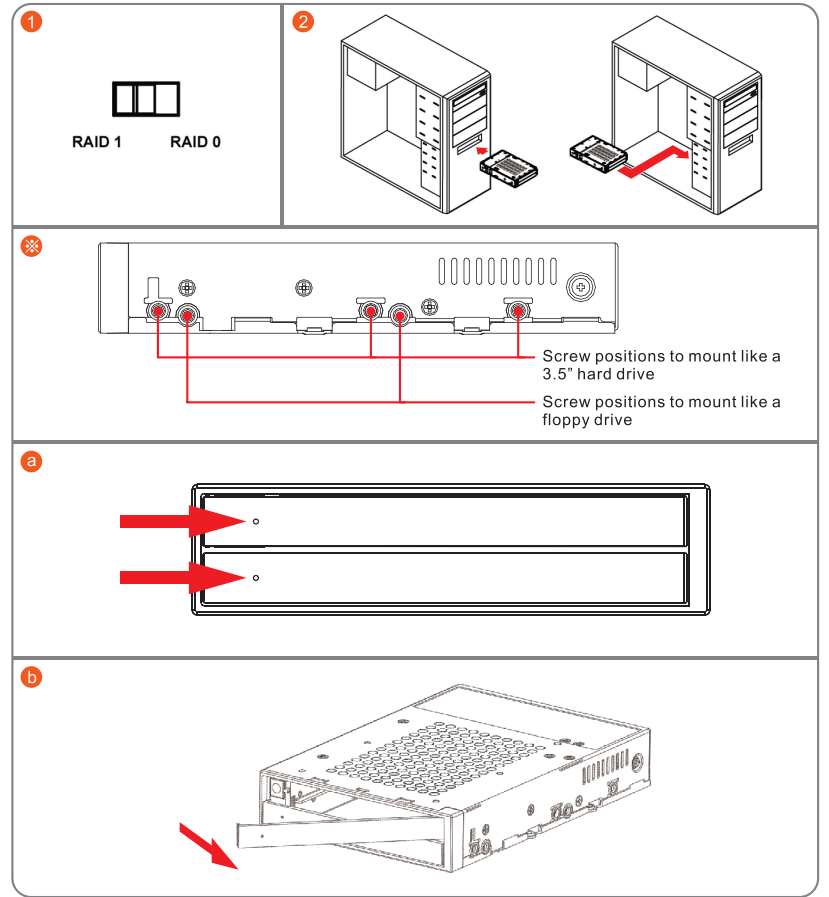
Please install iR2420-2S-S2 as the following instruction.

1. Choose the RAID mode with the RAID switch on the back panel. The default value is RAID 1.
2. Install the iR2420-2S-S2 unit into the housing and hook up the relevant cables to the relevant connectors. Please refer to accessory bag and use the enclosed 6#32\*5 screws to mount the iR2420-2S-S2 unit into the system housing.

※ Mounting Positions

3. By push further inside from the arrow point, the front panel will automatically bounce to further open to 90 degrees.

- a. Push the arrow point place
- b. Move the front case until 90 degrees



2

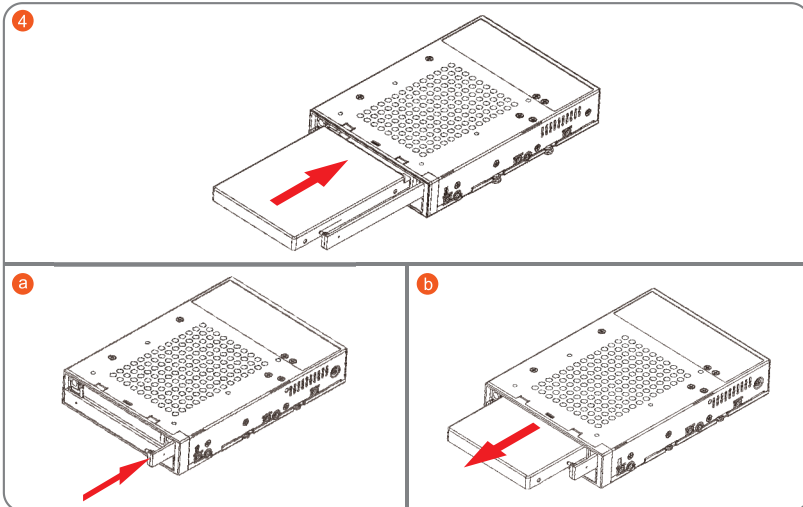
4. Install hard drives into iR2420-2S-S2 HDD slot and make sure the HDD is properly fix to the right position and cover the front panel.

5. When hardware installation is completed, you can turn on the power of the main unit to proceed with relevant settings and applications.

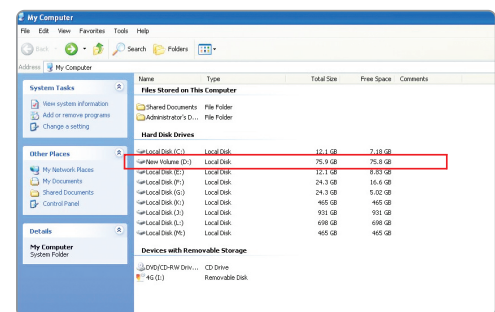
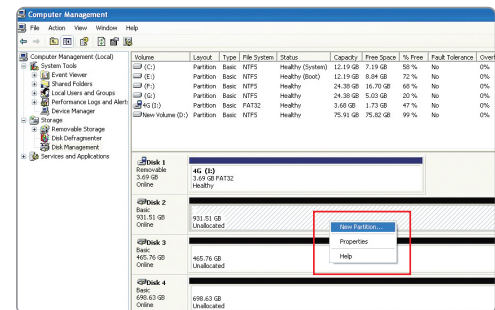
6. Installation completed. Your operating system should automatically detect the hard drives within. Please proceed to format the drives. Once formatting is completed, you may then start to operate the device.

※ For the future hard drive change, you can open the front panel to 90 degrees, perpendicular to the surface cover gently pushed into the body and when pushed in the end will be triggered the HDD to eject the device that HDD immediately withdraw. **Always assure the front panel has pull out entirely before close it.**

- a. Push the front case until the end
- b. The hard drive will be ejected



2. Enter the "Disk Management" and click on the additional hard drive, complete first the "initialization", when initialization is complete, you can follow your habits or requirements to "format" hard disk to the file type you desire, after formatting is complete you can start using the hard disk device.



### Precautions Before Application

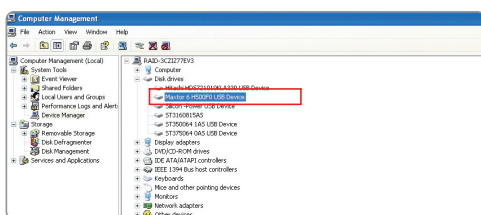
1. We suggest you to use 2 brand new 2.5-inch SATA hard drives with the same brand and model number for the best performance. When any one of the hard drives is failed, please ensure that the capacity of the new hard drive is the same or bigger than the original one.
2. Please ensure that the hard drives are free of bad tracks before using, otherwise, it may cause system crash in turn resulting in data loss.
3. We strongly suggest you that the RAID mode should be decided before starting use iR2420-2S-S2. If you need to reset the RAID mode after using iR2420-2S-S2, please remember to backup your data on the other hard drives or the data may lose.

Thank you for choosing product from RAIDON Technology Inc. This information in the manual has been thoroughly checked before publication, but may not conform to the product actually delivered which mean actual product specifications depend on the product shipped to you. Any update in the specifications or product-related information shall not be subject to further notice but for the latest information on the product, please visit the website as [www.RAIDON.com.tw](http://www.RAIDON.com.tw) or contact us at [supporting@raidon.com.tw](mailto:supporting@raidon.com.tw), and we will get back to you as soon as possible.

### Start-up of iR2420 and Hard Drive Device

Hardware installation and completely iR2420 booting, the operating system will automatically recognize your hard drive, but you need to format the hard drive before the data stored into the hard drive. Windows users please refer to the following steps to complete the hard disk formatting.

1. After booting, please enter into "Device Manager" and you should find the new adding drive.



3

4